

Portable power quality analysis center

Features

- 7" touchscreen - ergonomic and intuitive graphical user interface.
- Over 10 years of recording.
- CAT IV 600 V measurement category - high safety.
- All parameters according to class S - high accuracy of measurements.
- Li-Ion rechargeable battery - higher mobility.
- Powering from measured network - reliability of measurements.
- Removable memory card - recording data with no restrictions.
- Quick setup and reporting - ease of use.
- Cooperation with desktop Sonel Analysis software - extended data analysis.

Measured parameters

- Inrush current.
- Inverter efficiency.
- Voltages L1, L2, L3, N, PE (five measurement inputs) – average, minimum, maximum and instant values within the range up to 760 V, interoperability with voltage transducers.
- Currents L1, L2, L3, N (four measurement inputs) – average, minimum and maximum values, current measurement within the range up to 6 kA (depending on applied current clamp), interoperability with current transducers.
- Crest factors for current CFI and voltage CFU.
- Frequency within the range of 40...70 Hz.
- Active (P), reactive (Q), distortion (D) and apparent (S) power with the type of reactive power (capacitive and inductive).
- Active (E_p), reactive (E_Q) and apparent (E_S) energy.
- Power factor PF, $\cos\phi$, $\tan\phi$.
- Harmonics up to the 50th order of voltage and current.
- Event logging for current and voltage along with oscillograms and half-period RMS charts.
- 30-day load studies acc. to NEC220.87 standard
- Energy cost calculator.
- ...and much more.
- All parameters are recorded in compliance with class S according to IEC 61000-4-30 standard



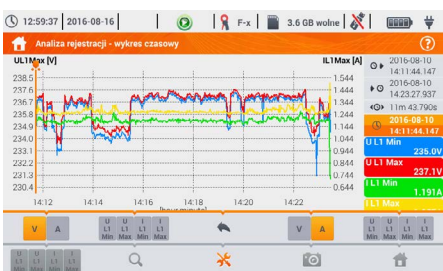
Wide range of mains to analyze

- With rated frequency 50/60 Hz
- With rated voltages: 58/100 V, 64/110 V, 110/190 V, 115/200 V, 120/208 V, 127/220 V, 133/230 V, 220/380 V, 230/400 V, 240/415 V, 254/440 V, 290/500 V, 400/690 V
- Direct current
- Systems:
 - » single-phase
 - » split-phase with common N
 - » three-phase – WYE with and without N conductor
 - » three-phase – Delta
 - » three-phase – WYE and Delta Aron
 - » with current and voltage transducers



Capabilities

PQM-707 is an autonomous meter allowing versatile measurement, analysis, and registration of energy network (DC and 50/60 Hz) parameters. All parameters are measured I/A/W class S of the IEC 61000-4-30 standard guaranteeing high accuracy of measurements. The **7-inch colour touchscreen** - The largest in this class of analyzers! - enables intuitive and ergonomic operation. Thanks to the built-in lithium-ion battery, the analyzer allows for efficient work during the measurement without the necessity of connecting an external AC adapter.



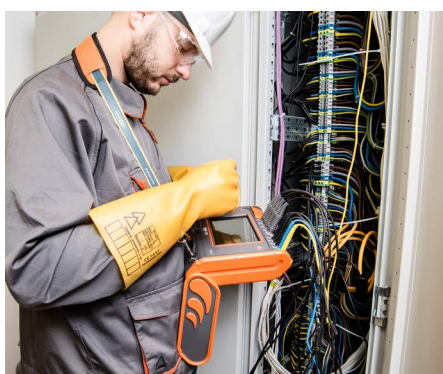
Displaying data

The analyzer is equipped with a readable colour touchscreen. Its **800 x 480 pixel** resolution provides both high comfort of interacting with the interface and high readability of the measurement results. **The included stylus allows you to work with dielectric gloves.**



Application

The analyzer is directed to a very wide range of users, with particular reference to the maintenance staff. Due to its mobility and autonomy, any problems occurring in the supply networks can be diagnosed on the spot. The analyzer can be used in virtually all kinds of networks with rated voltage from 54 V to 760 V - directly or indirectly via transducers. PQM-707 can be used in the field of professional power engineering, maintenance services in industrial plants, as well as among those providing services focused on network analysis.



Durable and practical casing









The casing has been designed to allow easy access to the touchscreen and all measurement and communication sockets. Folding lid protects the display from damages. Thanks to the IP51 protection degree, the device can be used in difficult conditions - it is not afraid of dust or water splashes.

Parameters

Parameter	Measuring range	Max. resolution	Accuracy
Alternating voltage (TRMS)	0.0...760.0 V	4 significant digits	±0.5% V_{nom}
Crest Factor			
Voltage	1.00...10.00 ($\leq 1,65$ for 690 V)	0.01	±5%
Current	1.00...10.00 (≤ 3.6 for I_{nom})	0.01	±5%
Alternating current (TRMS)	depending on clamp *	0.01% I_{nom}	±0.2% I_{nom} (error does not account for clamp error)
Frequency	40.00...70.00 Hz	0.01 Hz	±0.05 Hz
Active, reactive, apparent and distortion power	depending on configuration (transducers, clamps)	4 significant digits	depending on configuration (transducers, clamps)
Active, reactive and apparent energy	depending on configuration (transducers, clamps)	4 significant digits	as power error
cosφ and power factor (PF)	0.00...1.00	0.01	±0.03
tanφ	0.00...10.00	0.01	depends on error of active and reactive power
Harmonics			
Voltage	DC, 1...50	as for alternating voltage True RMS	±0.15% V_{nom} for m.v. < 3% V_{nom} ±5% m.v. for m.v. ≥ 3% V_{nom}
Current	DC, 1...50	as for alternating current True RMS	±0.5% I_{nom} for m.v. < 10% I_{nom} ±5% m.v. for m.v. ≥ 10% I_{nom}
THD			
Voltage	0.0...100.0%	0.1%	±5%
Current	(relative to RMS value)		±5%
Flicker index	0.40...10.00	0.01	±10%
Unbalance factor			
Voltage and current	0.0...10.0%	0.1%	±0,15% (absolute error)
Inrush current			
Current	depending on clamp *	0.01% I_{nom}	±4% m.v. for m.v. ≥ 10% I_{nom} ±4% I_{nom} for m.v. < 10% I_{nom} (RMS _{1/2})

m.v. – measured value

* F-1A1, F-2A1, F-3A1 probe: 0...1500 A AC (5000 A_{pp}) • F-1A, F-2A, F-2(US), F-3A probe: 0...3000 A AC (10 000 A_{pp}) • F-1A6, F-2A6, F-3A6 probe: 0...6000 A AC (20 000 A_{pp})
C-4A(US) probe: 0...1000 A AC (3600 A_{pp}) • C-5A (US) probe: 0...1000 A AC/DC (3600 A_{pp}) • C-6A (US) probe: 0..10 A AC (36 A_{pp}) • C-7A (US) probe: 0...100 A AC (360 A_{pp})

								
	C-4A(US)	C-5A(US)	C-6A(US)	C-7A(US)	F-2A(US)	F-1A1 / F-1A / F-1A6	F-2A1 / F-2A / F-2A6	F-3A1 / F-3A / F-3A6
	WACEGC4AOKRUSA	WACEGC5AOKRUSA	WACEGC6AOKRUSA	WACEGC7AOKRUSA	WACEGF2AOKRUSA	WACEGF1A1OKR WACEGF1AOKR WACEGF1A6OKR	WACEGF2A1OKR WACEGF2AOKR WACEGF2A6OKR	WACEGF3A1OKR WACEGF3AOKR WACEGF3A6OKR
Rated current	1000 A AC	1000 A AC 1400 A DC	10 A AC	100 A AC	3000 A AC	1500 / 3000 / 6000 A AC		
Frequency	30 Hz...10 kHz	DC...5 kHz	40 Hz...10 kHz	40 Hz...1 kHz	10 Hz...20 kHz	40 Hz...10 kHz		
Output signal level	1 mV / 1 A	1 mV / 1 A	100 mV / 1 A	5 mV / 1 A	38.8 μV / 1 A	77.6 μV / 1 A	38.8 μV / 1 A	19.4 μV / 1 A
Max. diameter of measured conductor	52 mm	39 mm	20 mm	24 mm	450 mm	360 mm	235 mm	120 mm
Minimum accuracy	≤0.5%	≤1.5%	≤1%	0.5%	0.5%	1%		
Battery power	–	✓	–	–	–	–		
Lead length	2.2 m	2.2 m	2.2 m	3 m	2.5 m	2.2 m		
Measurement category	IV 300 V	IV 300 V	IV 300 V	III 300 V	IV 600 V	IV 600 V		
Ingress protection	IP40					IP65		IP67

SONEL ANALYSIS

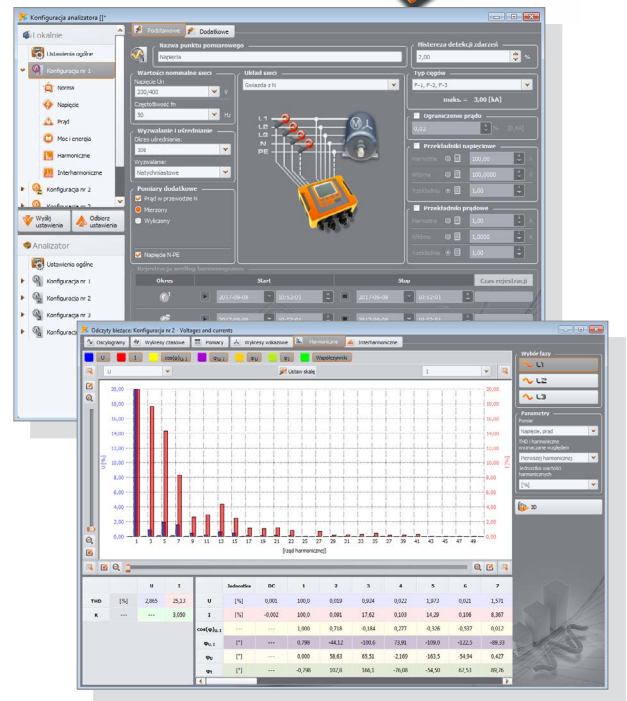


Sonel Analysis software - application delivered as standard accessory, indispensable for working with PQM-series analyzers. It enables:

- analyzer configuration,
- data reading from logger,
- preview of network parameters in real time (with capability of reading via GSM modem),
- deletion of data in the analyzer,
- data presentation in tables,
- data presentation in charts,
- data analysis in compliance with standard EN 50160 (reports) and other user defined reference conditions,
- independent support of multiple analyzers,
- analyzer firmware updates.

The software enables readout of selected parameters and their visualization in real time. These parameters are measured independently from the registration saved on the memory card. The user can view:

- charts of voltage and current progression (oscilloscope),
- charts of voltage and current over time,
- phasor diagram,
- measurements of multiple parameters,
- harmonics and harmonic powers (estimating the direction of harmonics),
- interharmonics.



Standard accessories

Test lead markers



**brown/yellow/orange/
gray/black/red/blue/
white (4 pcs)**
WAOZNPRZBRUSA
WAOZNPRZYUSA
WAOZNPRZORUSA
WAOZNPRZGRUSA
WAOZNPRZBLUSA
WAOZNPRZREUSA
WAOZNPRZBUUSA
WAOZNPRZWHUSA

green (2 pcs)
WAOZNPRZGRNUSA



Crocodile clip 1 kV CAT III 32 A

black/red/blue/white/green
WAKROBL30K03USA
WAKRORE30K03USA
WAKROBU30K03USA
WAKROWH30K03USA
WAKROGRN30K03USA



Magnetic adapter

blue/black/white/red
WAADAUMAGKBU
WAADAUMAGKBL
WAADAUMAGKWH
WAADAUMAGKRE



4x F-2A(US) flexible probe (Ø 235 mm) 0...3 kA AC

WACEGF2AOKRUSA



5x 2 m lead (black) 1 mm² CAT III 1 kV 19 A with banana plugs

WAPRZ002BLUSA



Li-Ion rechargeable battery 10.8 V 3.35 Ah

WAAKU15USA



Power supply

Z-7 power supply
WAZASZ7

AZ-2 adapter
WAAZAAZ2USA

**125 V power cord
(IEC C7 plug)**
WAPRZLAD230US

**battery charging cable
for 12 V car sockets**
WAPRZLAD12SAM

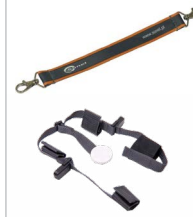


Carrying & mounting

L-4 carrying case
WAFUL4

strap for carrying the meter
WAPAZPASS

**magnetic holder for
hanging the meter**
WAPAZUCH7



Data transmis- sion & analysis

**USB data transmis-
sion cable**
WAPRZUSB

**Sonel Analysis 4
software for PQM series**
WAPROANALIZA4



**Calibration
certificate issued
by an accredited
laboratory**

Optional accessories



F-1A flexible probe
(Φ=360 mm)

1.5 kA: WACEGF1A10KR
3 kA: WACEGF1A0KR
6 kA: WACEGF1A60KR



F-2A flexible probe
(Φ=235 mm)

1.5 kA: WACEGF2A10KR
3 kA: WACEGF2A0KR
6 kA: WACEGF2A60KR



F-3A flexible probe
(Φ=120 mm)

1.5 kA: WACEGF3A10KR
3 kA: WACEGF3A0KR
6 kA: WACEGF3A60KR



C-4A (US) probe
(Ø 52 mm)
1000 A AC

WACEGC4A0KRUSA



C-5A(US) probe
(Ø 39 mm)
1000 A AC/DC

WACEGC5A0KRUSA



C-6A(US) probe
(Ø 20 mm)
10 A AC

WACEGC6A0KRUSA



C-7A(US) probe
(Ø 24 mm)
100 A AC

WACEGC7A0KRUSA



L2 carrying case
for probes

WAWALL2



Magnetic voltage adapter

black
WAADAUMAGKBL
blue
WAADAUMAGKB



Pin probe, blue 1 kV
(banana socket)

black / blue / red / yellow
WASONBLOGB1
WASONBUOGB1
WASONREOGB1
WASONYEOGB1



ASX-1 piercing adapter
- set (4 pcs)

WAADAPRZASX1



Voltage adapter
with M4/M6
thread - set 5 pcs

WAADAM4M6



Flat test clip
(grip - banana
socket) (5 pcs)

WASONKCB1KPL



Test clips with steel jaws
- set (5 pcs)

WASONKGB1KPL



Adapter for control terminals
(5 pcs)

WAADAPRZKPL1



AGT-16C three-phase socket adapter
16 A / 32 A (PEN)

WAADAAGT16C
WAADAAGT32C



AGT-16P three-phase socket adapter
16 A / 32 A

WAADAAGT16P
WAADAAGT32P



AGT-63P three-phase socket adapter
63 A

WAADAAGT63P



AGT-16T industrial socket adapter
16 A / 32 A

WAADAAGT16T
WAADAAGT32T

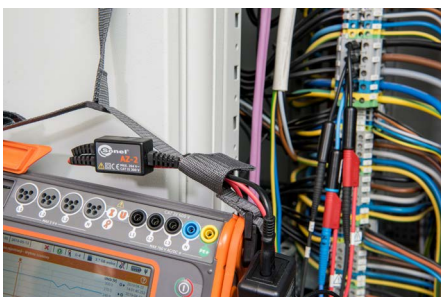


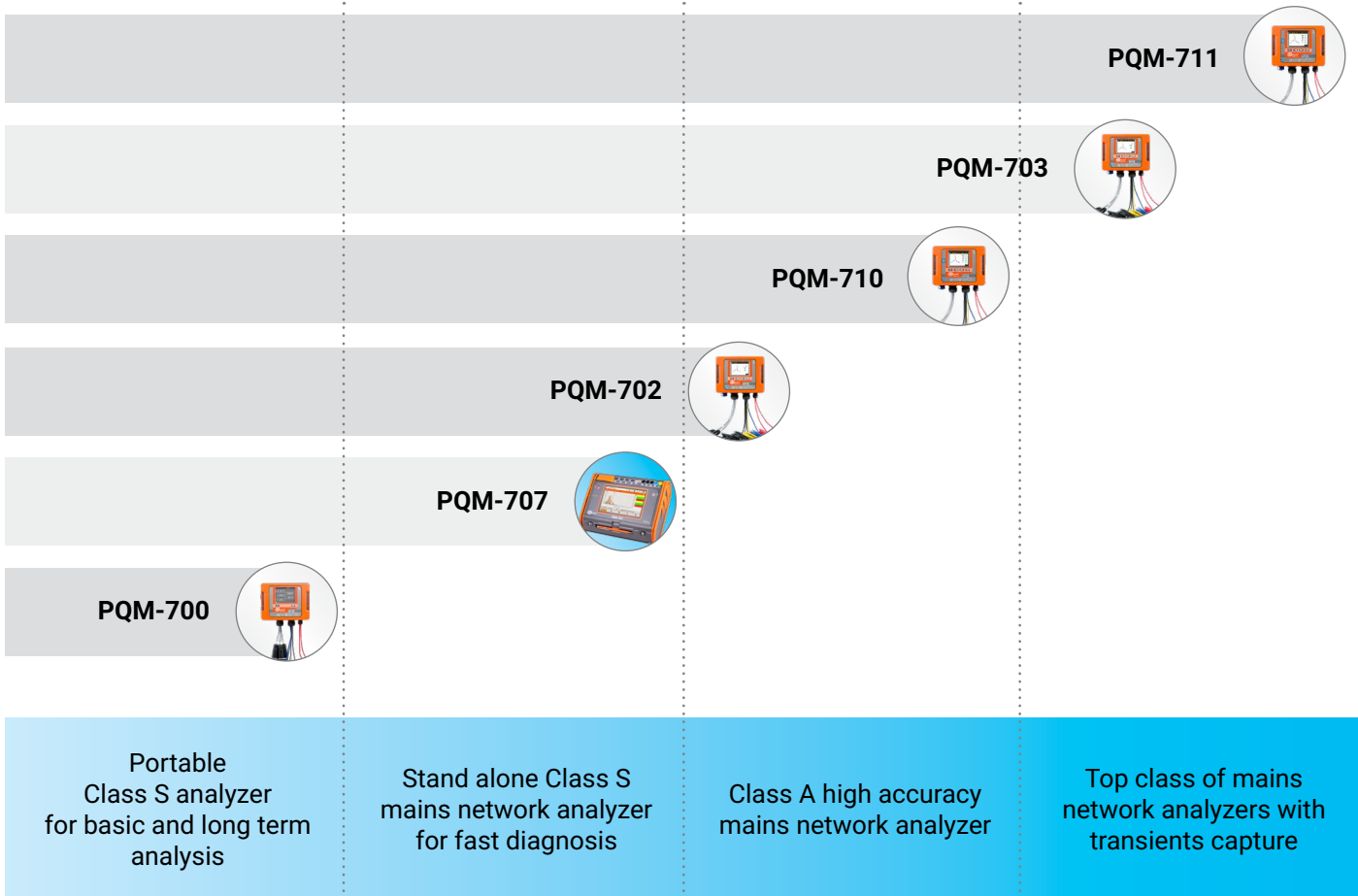
Cover with a magnetic strip
(universal)

WAPOZUCH8



Calibration certificate
with accreditation





Get to know the instrument
before buying

www.sonel.com

Expand your capabilities
with additional accessories